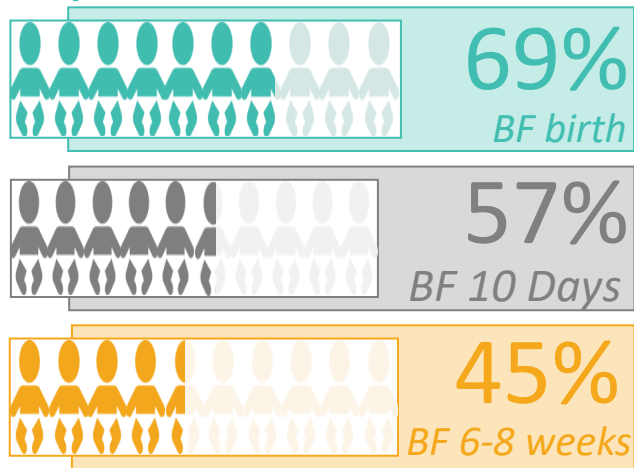
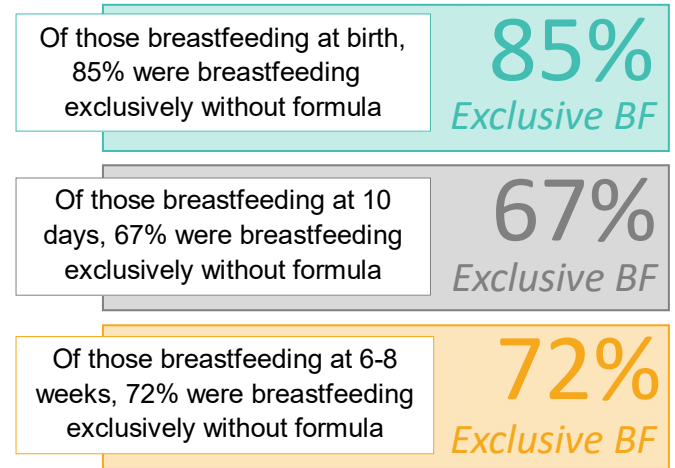


Breastfeeding in Derbyshire at birth, 10 days, and 6-8 weeks (Q1 - Q4 2021/22)

1. Derbyshire Prevalence

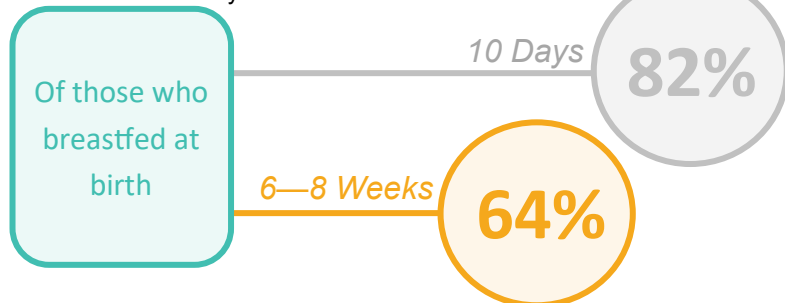


2. Exclusive Breastfeeding



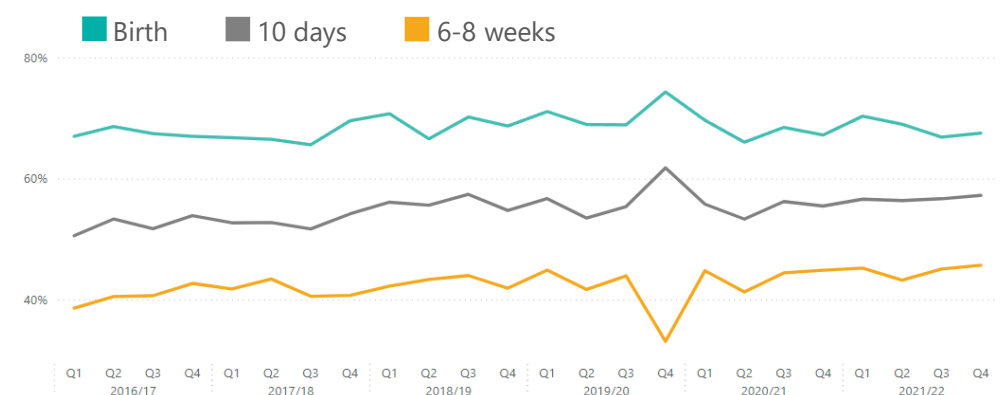
3. Sustainment

Of those who breastfed at birth, these are the percentages who continued to breastfeed at 10 days and at 6-8 weeks



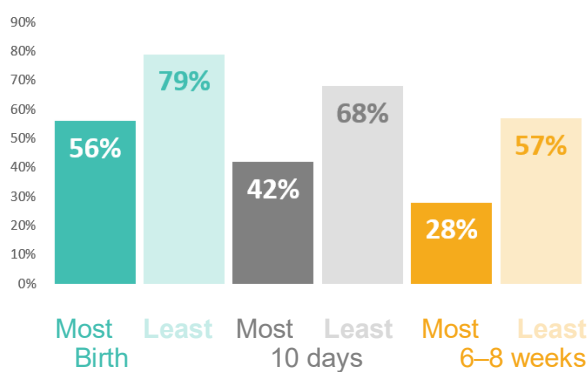
4. Trends*

*Does not include complete Q4 data for 2019/20

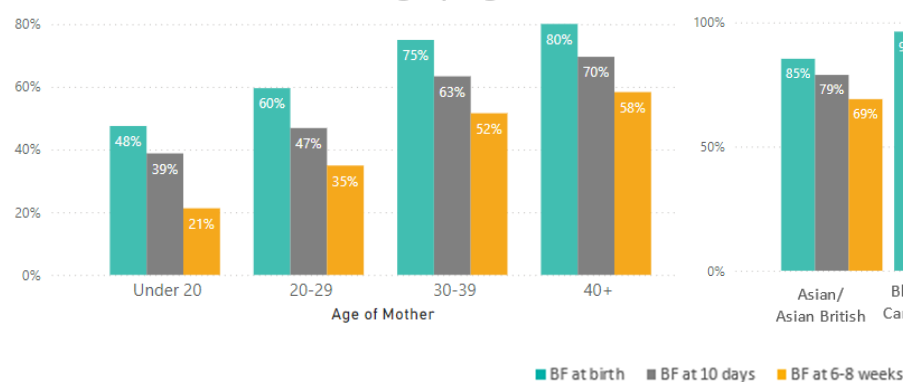


5. Prevalence & Deprivation

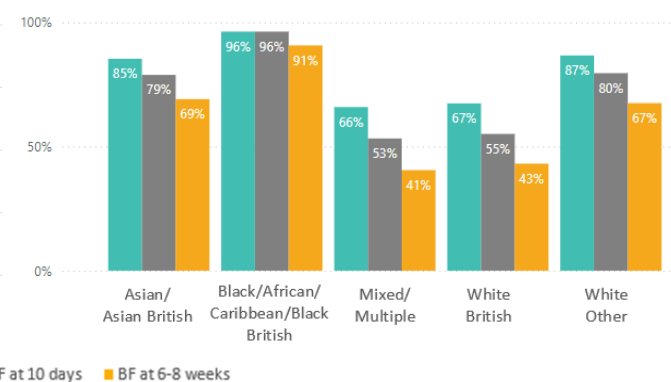
Breastfeeding prevalence comparing the most deprived decile to the least deprived decile using the latest IMD data.



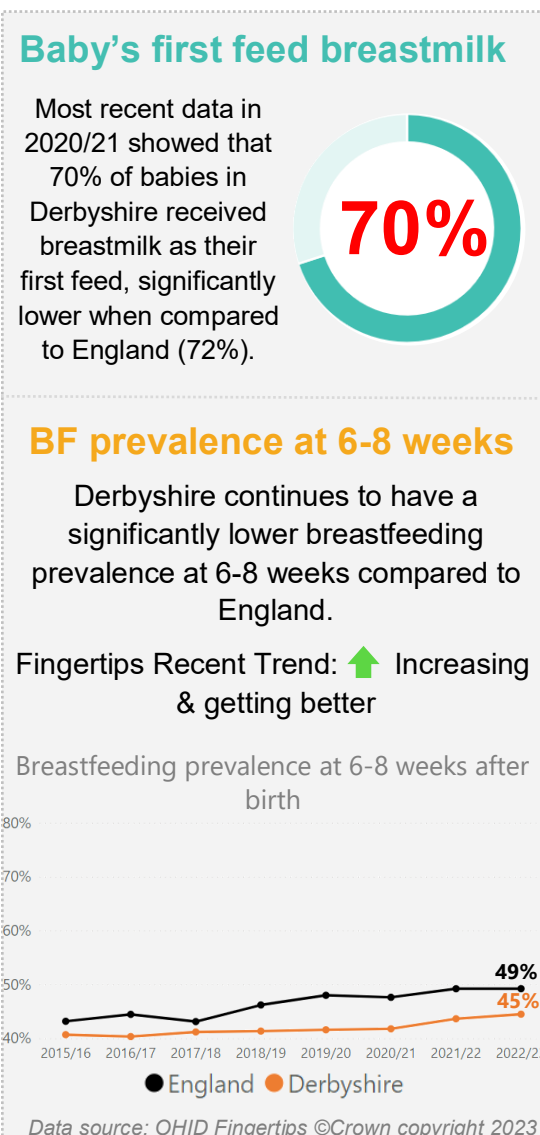
Breastfeeding by Age



Breastfeeding by Ethnicity



8. Compared to England



7. Breastfeeding compared to Derbyshire

